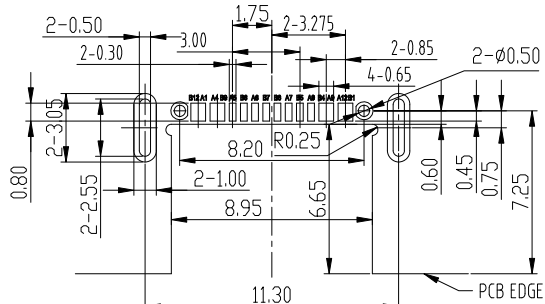
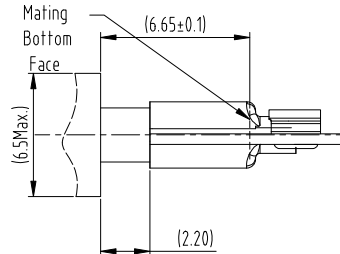
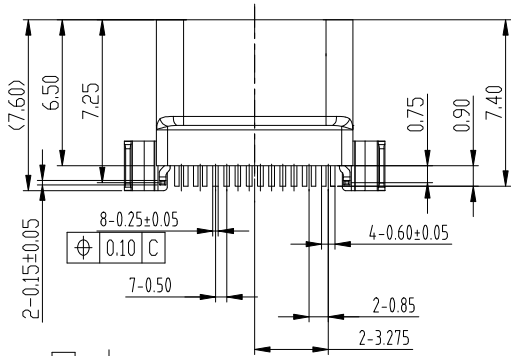
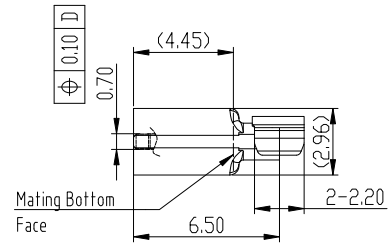
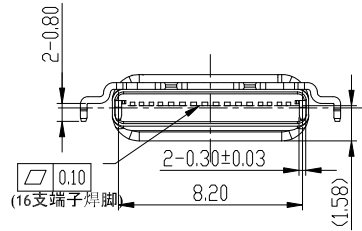


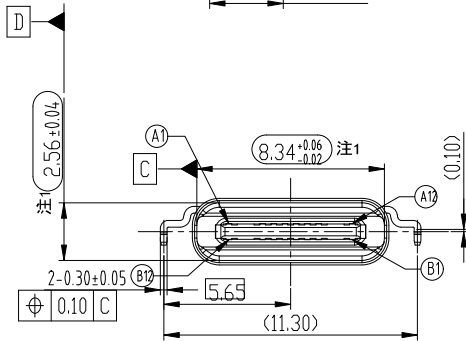
RoHS
Compliant



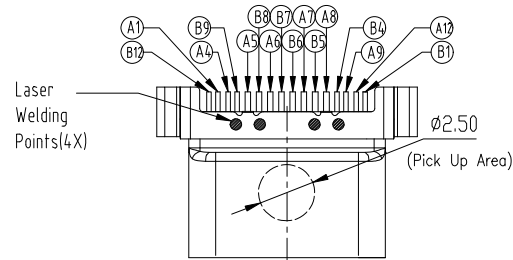
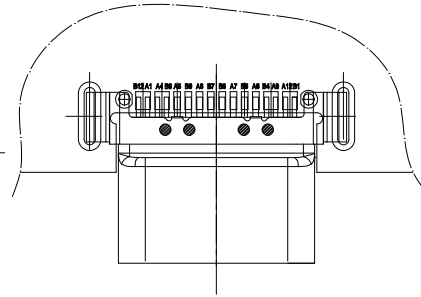
RECOMMENDED PCB LAYOUT
TOLERANCE: ±0.05
(建议使用刷Sn钢板厚度0.12mm)



Mated Condition(REF.)



注1: "○"表示CPK尺寸



- NOTES:
- MATERIAL SPECIFICATION:
 - HOUSING: High-Temp. Plastics, UL94V-0, Color: Black.
 - CONTACTS: Copper Alloy T=0.25mm.
 - OUTER SHELL: Stainless Steel, T=0.30mm.
 - INNER SHELL: Stainless Steel, T=0.20mm.
 - MID-PLATE: Stainless Steel, T=0.20mm.
 - SOLDER-PLATE: Stainless Steel, T=0.10mm.
 - Blue Silicone
 - PLATING SPECIFICATION:
 - CONTACTS:
 - NI UNDERPLATED OVER ALL;
 - Gold Plated On Contact Area;
 - Gold Flash Plated On Solder Area.
 - SHELL:
 - NI UNDERPLATED OVER ALL;
 - RoHS AND HF COMPLIANT.
 - MECHANICAL PERFORMANCE:
 - MATING FORCE: 6-20N (Initial); 5-20N (After)
 - UNMATING FORCE: 8-20N (Initial); 6-20N (After)
 - DURABILITY: 10000 CYCLES.
 - ELECTRICAL PERFORMANCE:
 - CURRENT RATING: 3.0A; VOLTAGE RATING: 5.0V
 - LLCR:
 - VBUS & GND PINS: 40mA/PIN MAX.;
 - OTHERS PINS: 40mA/PIN MAX.;
 - LLCR MAX. CHANGE OF ALL PINS: 10md.
 - INSULATION RESISTANCE: 100MΩ MIN.
 - DIELECTRIC WITHSTANDING VOLTAGE:
 - 100V AC FOR 1 MINUTE.
 - ENVIRONMENTAL PERFORMANCE:
 - OPERATING TEMPERATURE: -20°C ~ +85°C.
 - RECOMMENDED PROCESS:
 - THE PEAK TEMPERATURE ON THE BOARD SHALL MAINTAIN 10±1 SECONDS AT 260±5°C.

Pin Assignments			
Contact Number	Signal Name	Contact Number	Signal Name
A1	GND	B12	GND
A2		B11	
A3		B10	
A4	VBUS	B9	VBUS
A5	CC1	B8	SBU2
A6	Dp1	B7	Dn2
A7	Dn1	B6	Dp2
A8	SBU1	B5	CC2
A9	VBUS	B4	VBUS
A10		B3	
A11		B2	
A12	GND	B1	GND

广东小迈实业有限公司

Website:

<https://www.xmconn.com>

TEL:

18938295888



PART NAME

USB Type-C 母 16pin 沉板 1.58
防水型 IP66/IP68, 成品

PART NO.

DM68015-16FBAP-A

TOLERANCE UNLESS OTHERWISE SPECIFIED:

X ±0.2
X.X ±0.15
X.XX ±0.10
X.XXX ±0.050

DRAWING:

Li

DATE:

2023.08.18

CHECK:

Chen

DATE:

2023.08.18

APPROVAL:

Wen

DATE:

2023.08.18

SCALE

1:1

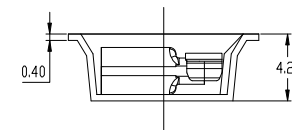
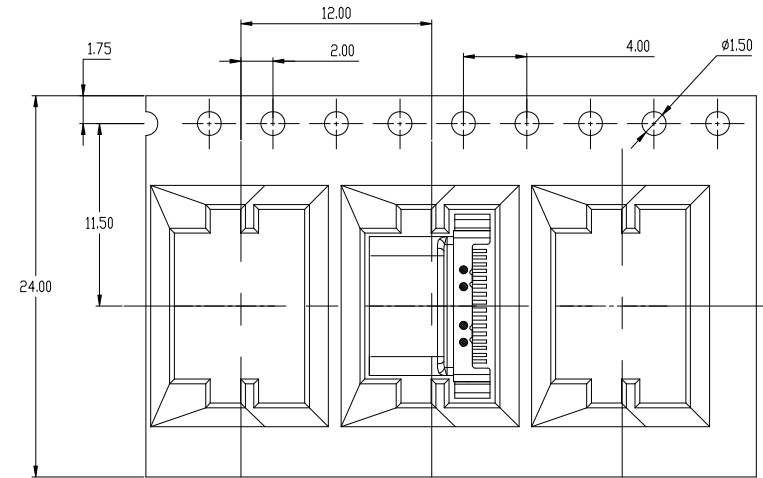
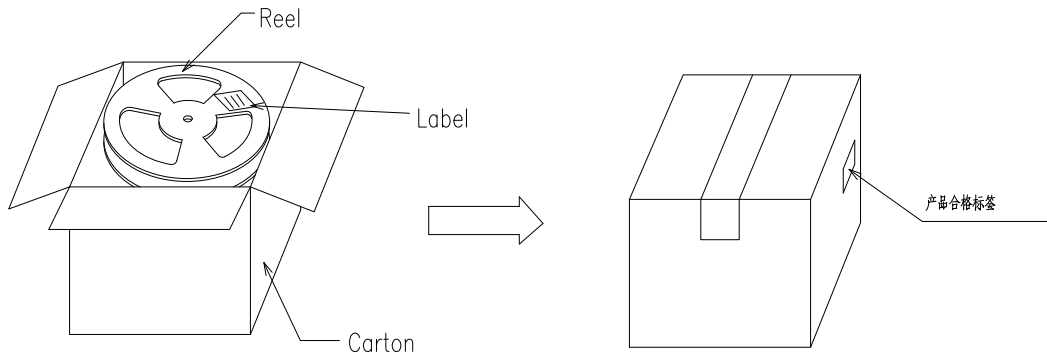
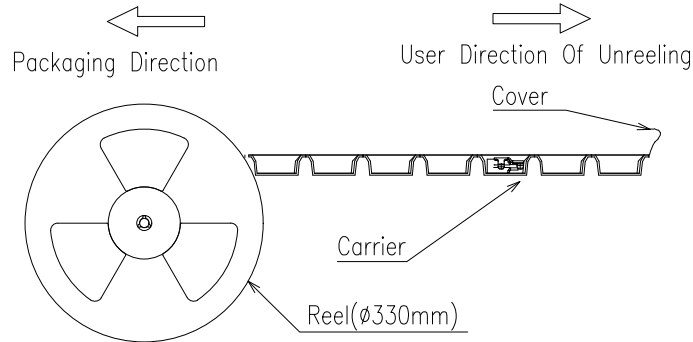
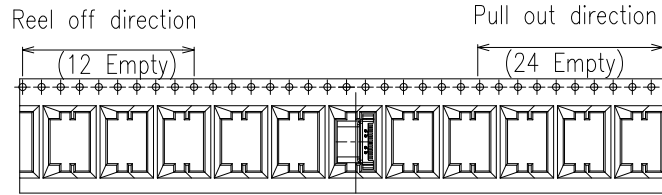
SHEET

1/1

REV: A0

SIZE: A4

RoHS
Compliant



NOTES:

1. 载带材质: PET 透明
2. 包装内容: SEE TABLE A

TABLE A :

PART NAME	PART NUMBER	PCS/ REEL	REEL/CARTON	QTY/CARTON	CARTON SIZE/MM
TYPE C 16PIN	X2232	1500	10 REEL	15000 PCS	340*340*300

广东小迈实业有限公司

Website:

<https://www.xmconn.com>

TEL:

18938295888



PART NAME

USB Type-C 母 16pin 沉板 1.58 两脚防水型

PART NO.

DM68015-16FBAP-A

TOLERANCE UNLESS OTHERWISE SPECIFIED:

X ±0.2
X.X ±0.15
X.XX ±0.10
X.XXX ±0.050

DRAWING:

Li

DATE:

2023.08.18

SCALE

1:1

SHEET

1/1

REV: A0

CHECK:

Chen

DATE:

2023.08.18

SIZE: A4

APPROVAL:

Wen

DATE:

2023.08.18

