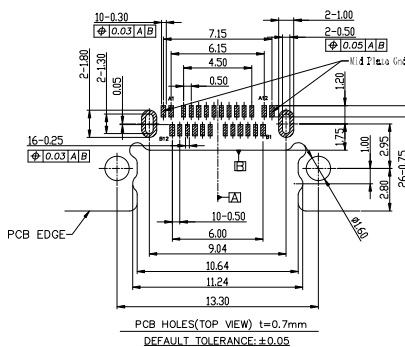
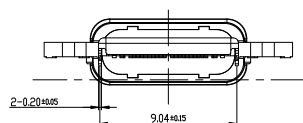
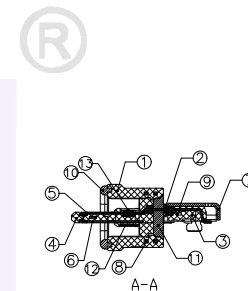
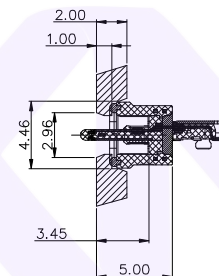
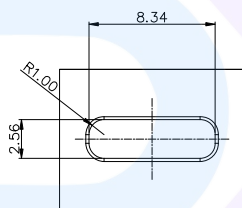
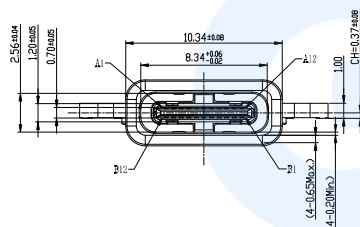
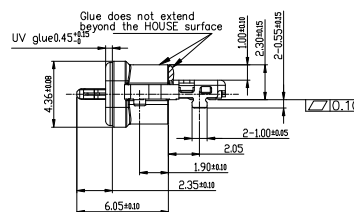
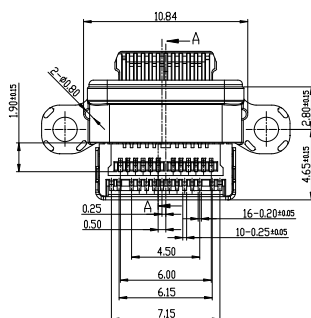
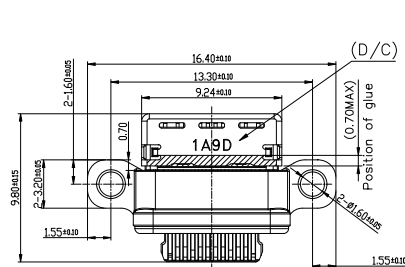
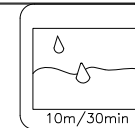


RoHS  
Compliant



13	EMI Termind-2	1pcs	STAINLESS STEEL SUS304-1/2H T=0.10mm	CLEAN							
12	EMI Termind-1	1pcs	STAINLESS STEEL SUS304-1/2H T=0.10mm	CLEAN							
11	GLUE	1pcs	EPOXY	BLACK COLOR							
10	Waterproof ring	1pcs	UV Glue	N/A							
9	GROUND PLATE	1pcs	STAINLESS STEEL SUS304-H T=0.15mm	SOLDER AREA:1.25um Ni Min.(LAYER 1)							
8	IM SHELL	1pcs	STAINLESS STEEL SUS304-H T=0.20mm	CLEAN							
7	SUB SHELL	1pcs	STAINLESS STEEL SUS316L T=0.20mm	All over 1.25um Ni Min.(LAYER 1)							
6	BOTTOM CONTACT	1set	C18400 R540 T=0.12mm	Min 0.76µm Au on exposed contact area of melting side and Min 0.076µm Au all over of contact including side and bottom side(LAYER 2),All over 1.25um Ni Min.(LAYER 1)							
5	TOP CONTACT	1set	C18400 R540 T=0.12mm	Min 0.76µm Au on exposed contact area of melting side and Min 0.076µm Au all over of contact including side and bottom side(LAYER 2),All over 1.25um Ni Min.(LAYER 1)							
4	INSERT MOLD 3RD	1pcs	DSM PA46 HFX33S	UL94V-0 / BLACK							
3	INSERT MOLD 2ND	1pcs	DSM PA46 HFX33S	UL94V-0 / BLACK							
2	INSERT MOLD 1ST	1pcs	DSM PA46 HFX33S	UL94V-0 / BLACK							
1	HSG IM SHELL	1pcs	NYLON PA10T MONYL R6036NH	UL94V-0 / BLACK							
ITEM NAME QTY MATERIAL FINISH											
A1	A2	A3	A4	A5	A6	A7	A8	A9	A10	A11	A12
GND	TX1+	TX1-	Vbus	CC1	D+	D-	SBU1	Vbus	RX2-	RX2+	GND
B12	B11	B10	B9	B8	B7	B6	B5	B4	B3	B2	B1
GND	RX1+	RX1-	Vbus	SBU2	D-	D+	CC2	Vbus	TX2-	TX2+	GND

- NOTES:  
SPECIFICATION:
- CURRENT RATING: 3.0A MAX
  - DIELECTRIC WITHSTAND VOLTAGE: 100VAC
  - TEMPERATURE RANGE: -30 °C ~ 85 °C
  - CONTACT RESISTANCE: 40 MILLIONHM MAX
  - INSULATION RESISTANCE: 100 MEGOHMS MIN.
  - INSERTION FORCE : 5N~20N
  - UNMATING FORCE: 8N~20N
  - DURABILITY:10,000 CYCLES

广东小迈实业有限公司

Website:

<https://www.xmconn.com>

TEL:

18938295888



PART NAME TYPE C 24Pin CH0.37mm SMT WP TYPE

PART NO. DM68006-24FBAP-B

TOLERANCE UNLESS OTHERWISE SPECIFIED:  
X ±0.2  
X.X ±0.15  
X.XX ±0.10  
X.XXX ±0.050

DRAWING:

Li

DATE:

2023.08.18

SCALE

SHEET

REV:A0

CHECK:

Chen

DATE:

2023.08.18

1:1

1/1

SIZE: A4

APPROVAL:

Wen

DATE:

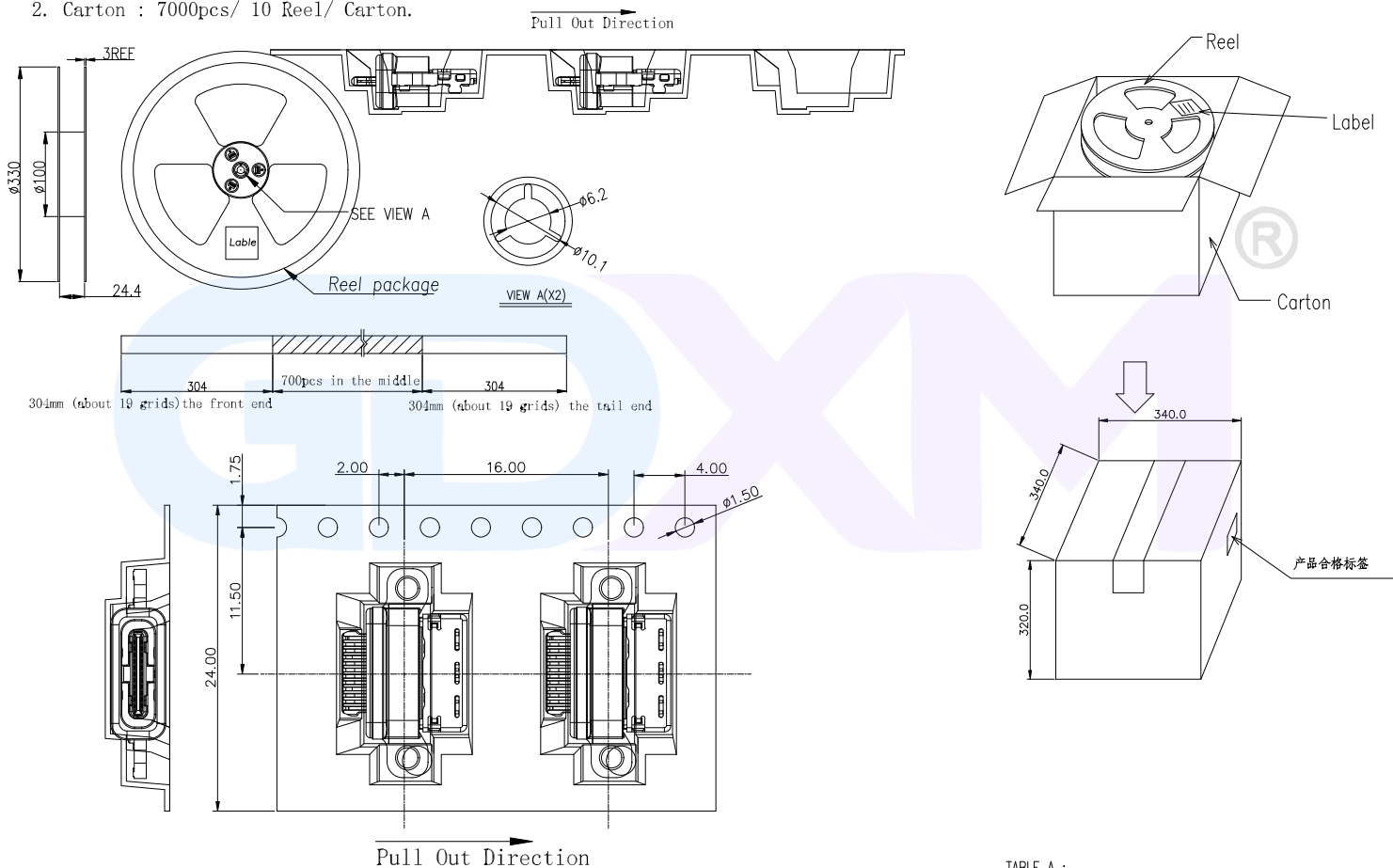
2023.08.18



RoHS  
Compliant

□ Packing Notes:

1. Reel : 700pcs/ Reel.
2. Carton : 7000pcs/ 10 Reel/ Carton.



X.	±0.50	X.*	±2*
.X	±0.30	.X*	±1*
.XX	±0.20	.XX*	±0.5*
.XXX	±0.05		

TABLE A :

PART NAME	PART NUMBER	PCS/ REEL	REEL/CARTON	QTY/CARTON	CARTON SIZE/MM
USB C F TYPE(Mate20)	GAP-YCF021-1R	700	10 REEL	7000 PCS	345*345*320

广东小迈实业有限公司

Website:

<https://www.xmconn.com>

TEL:

18938295888



PART NAME

USB C F TYPE(Mate20)  
防水型双排SMT 沉板1.60 CH=0.37

PART NO.

DM68006-24FBAP-B

TOLERANCE UNLESS OTHERWISE SPECIFIED:

X ±0.2  
X.X ±0.15  
X.XX ±0.10  
X.XXX ±0.050

DRAWING:

Li

DATE:

2023.08.18

SCALE

SHEET

REV:A0

CHECK:

Chen

DATE:

2023.08.18

1:1

1/1

SIZE: A4

APPROVAL:

Wen

DATE:

2023.08.18



4

4