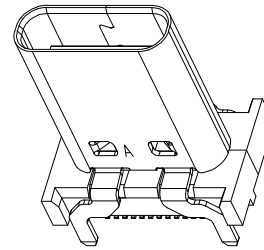
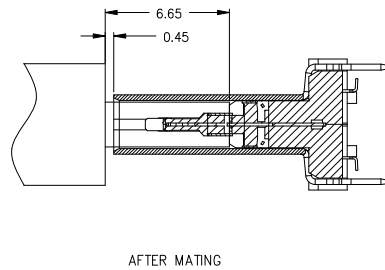
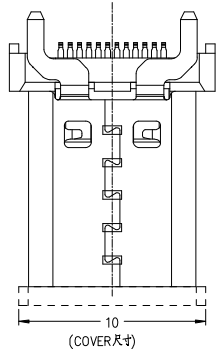


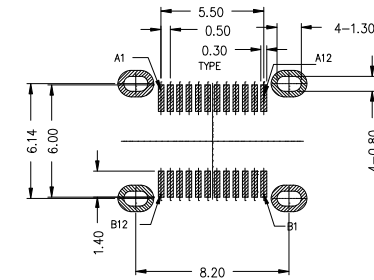
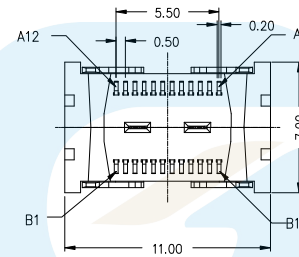
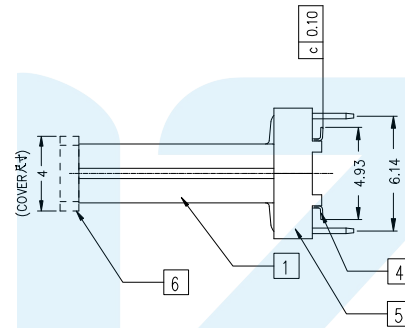
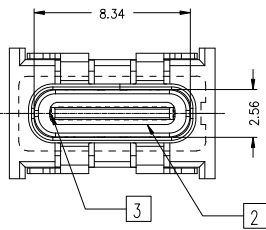
RoHS  
Compliant

| ZONE | ECN.N.O. | DESCRIPTION | DRAWING | DATE       |
|------|----------|-------------|---------|------------|
| A    |          | INITIAL     | 林生財     | 2020.02.18 |



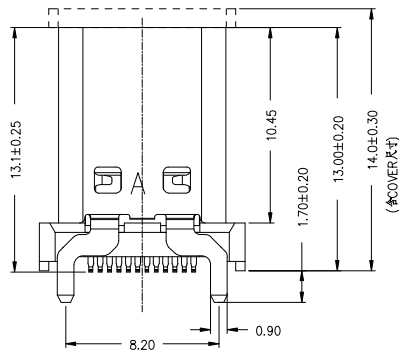
NOTE:

- Contact Resistance: 40mOHM Max.;
- Dielectric Withstanding Voltage: 100V AC For 1 Minute;
- Insulation Resistance: 100M OHM Min.;
- Mating And Unmating Force:  
Mating Force: 5~20N  
Unmating Force: 8~20N;  
6~20N AFTER TEST;
- Durability: 10000 Cycles;



RECOMMEND P.C.B LAYOUT (COMPONENT SIDE)

TOLERANCE FOR PCB LAYOUT IS ± 0.05  
KEEP OUT AREA



USB TYPE-C PIN ASSIGNMENTS

| PIN NUMBER | SIGNAL NAME | PIN NUMBER | SIGNAL NAME | NO. | DESCRIPTION   | MATERIAL                 | REMARKS   | QTY |
|------------|-------------|------------|-------------|-----|---------------|--------------------------|---|-----|
| A1         | GND         | B12        | GND         | 6   | Cover         | High Temperature Plastic | Color black UL94V-0                                 | 1   |
| A2         | TX1+        | B11        | RX1+        | 5   | InsertMolding | High Temperature Plastic | Color black UL94V-0                                 | 1   |
| A3         | TX1-        | B10        | RX1-        | 4   | Contact       | Copper Alloy             | Mating Area: Gold plating<br>Solder Tails: Matt Tin | 24  |
| A4         | V BUS       | B9         | V BUS       | 3   | Mid Plate     | Stainless Steel          |   | 1   |
| A5         | CC1         | B8         | SBU2        | 2   | GND Plate     | Stainless Steel          |   | 2   |
| A6         | D+          | B7         | D-          | 1   | Shell         | Stainless Steel          | Nickel plating overall                              | 1   |
| A7         | D-          | B6         | D+          |     |               |                          |   |     |
| A8         | SBU1        | B5         | CC2         |     |               |                          |   |     |
| A9         | V BUS       | B4         | V BUS       |     |               |                          |   |     |
| A10        | RX2-        | B3         | TX2-        |     |               |                          |   |     |
| A11        | RX2+        | B2         | TX2+        |     |               |                          |   |     |
| A12        | GND         | B1         | GND         |     |               |                          |   |     |



LZG INDUSTRIAL CO. LTD

|             |                  |       |            |          |     |
|-------------|------------------|-------|------------|----------|-----|
| DRAWING:    | 林生財              | DATE: | 2020.02.18 | SCALE    | 1:1 |
| CHECK:      | 李宏鑫              | DATE: | 2020.02.18 | MATERIAL | *   |
| APPROVAL:   | 楊進堂              | DATE: | 2020.02.18 | DWG. NO. |     |
| DRAWING NO. | ZB48068-24DBAP-A |       |            | SHEET    | 1/1 |

|           |  |                      |                         |                       |             |  |
|-----------|--|----------------------|-------------------------|-----------------------|-------------|--|
| PART NAME | USB 3.1 TYPE C FEMALE<br>VERTICAL H13.0mm SMT TYPE | TOLERANCE UNLESS     | 0.0±0.25                | 0.1±2°                | UNIT:<br>mm |  |
| PART NO.  | ZB48068-24DBAP-A                                   | OTHERWISE SPECIFIED: | 0.00±0.15<br>0.000±0.10 | 0.0°±1°<br>0.00°±0.5° |             |  |