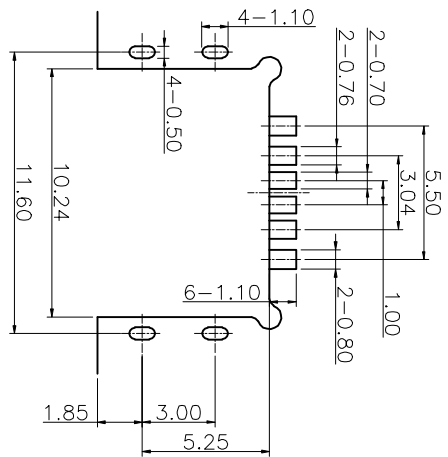
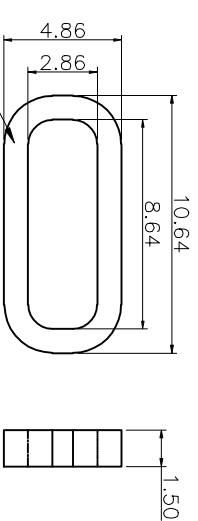
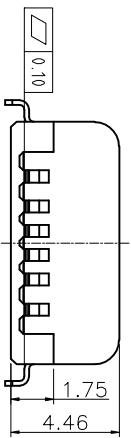
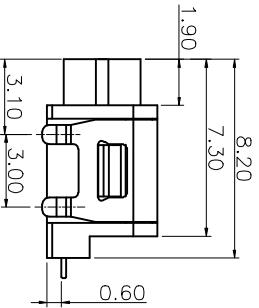
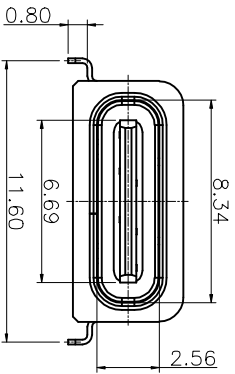
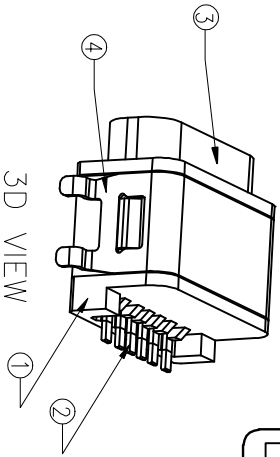
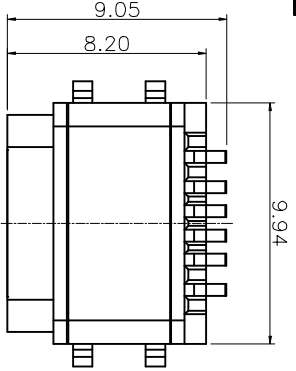
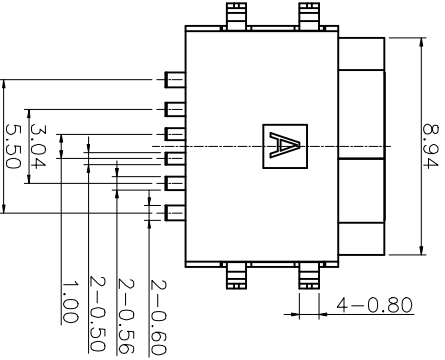


RoHS
Compliant



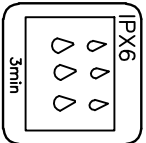
RECOMMENDED PCB LAYOUT(TOP VIEW)
DEFAULT TOLERANCE+/-0.05



结构设计注意:
1. 成品使用时, 如有洗面奶泡沫、牙膏、洗手液、脏污液体, 请在TYPE-C口外面再设计一层外壳, 保护TYPE-C接口金手指不会被脏污覆盖。

A5	CC1	B12	GND
A9	VBUS	B9	VBUS
A12	GND	B5	CC2

NO.	DESCRIPTION	MATERIAL	REMARKS	QTY
5	WATERPROOF RING	SILICA GEL	COLOR BLACK	1
4	SHELL	SUS 301	NICKEL PLATING T=0.20mm	1
3	SHELL	SUS 304	NICKEL PLATING T=0.50mm	1
2	CONTACT	PHOSPHOR BRONZE	Au/Ni Plating T=0.20mm	6
1	HOUSING	PAT10T	COLOR BLACK	1



SPECIFICATIONS:

- ELECTRICAL CHARACTERISTICS:
 - RATING: 3A;
 - CONTACT RESISTANCE: 30 mΩ MAX.(INITIAL);
 - DIELECTRIC WITHSTANDING: 100V AC MIN.;
 - INSULATION RESISTANCE: 100MΩ MIN.;
- DURABILITY: 5,000 CYCLES MIN.;
- INSERTION FORCE: 5-20N;
- EXTRACTION FORCE: 8-20N;
- WATER PROOFNESS: THIS PRODUCT IS BASED ON IPX6.
- PLUG INTERFACE DIMENSIONS COMFORM TO USB2.0 SPEC.
- PACKAGING: TAPE & REEL.

ZONE	EC N. NO.	DESCRIPTION	DRAWING	DATE
A	INITIAL		林生材	2020.02.18

PART NAME	WATERPROOF TYPE C 6PIN	TOLERANCE UNLESS	0.0±0.3
PART NO.	ZB48020-06SBAP-A	OTHERWISE SPECIFIED:	0.00±0.1 0.00±0.05

LZG INDUSTRIAL CO., LTD

CHECK:	林生材	DATE:	2020.02.18	SCALE	1:1
APPROVAL:	李楚鑫	DATE:	2020.02.18	MATERIAL	*
DRAWING NO.	柳建宝	DATE:	2020.02.18	DWG. NO.	
	ZB48020-06SBAP-A			SHEET	1/1