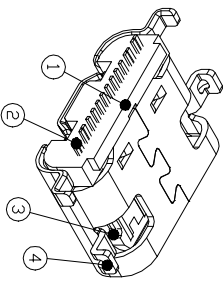
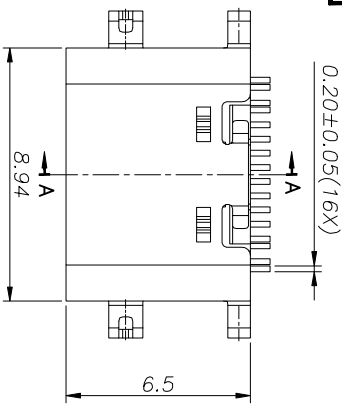
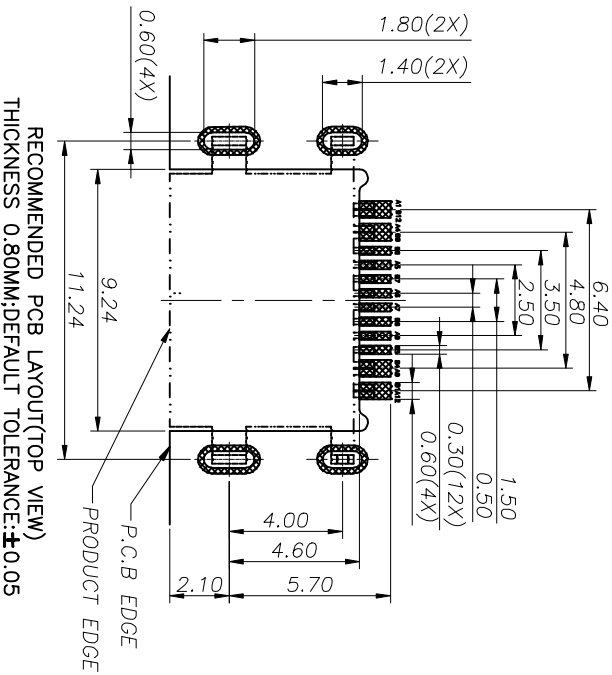
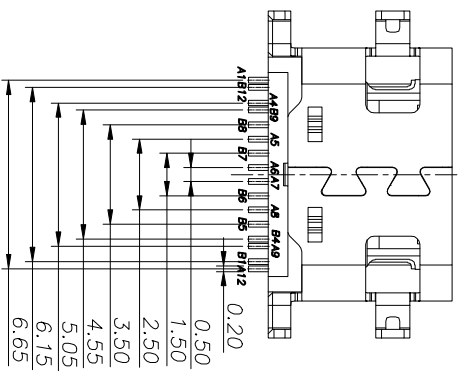
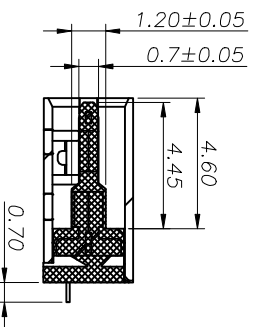
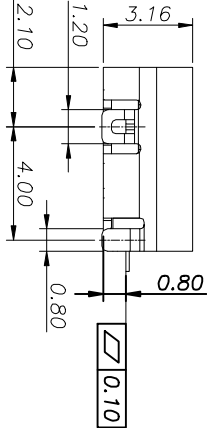
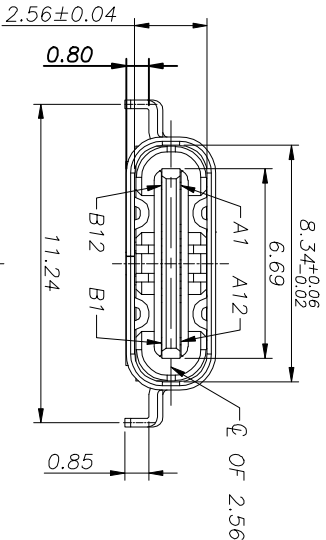


ROHS
Compliant



3D VIEW



- SPECIFICATIONS:**
1. MECHANICAL PERFORMANCE:
 - 1-1. INSERTION FORCE: 0.3~2.0kgf
 - 1-2. REMOVAL FORCE: 0.8kgf~2.0kgf
 - 1-3. DURABILITY: 10000 CYCLES.
 2. ELECTRICAL PERFORMANCE:
 - 2-1. CURRENT RATING: 3.0A
 - 2-2. VOLTAGE RATING: 5.0V
 3. ENVIRONMENTAL PERFORMANCE: OPERATING TEMPERATURE: -25~C~+85~C. 4.IR REFLOW: THE PEAK TEMPERATURE ON THE BOARD SHALL
- VBUS & GND PINS AND OTHER PINS: 40mA/PIN MAX.
SHIELD: 50mA/MAX.
LDR MAX. CHANGE OF ALL PINS: 10mA.
2-3. INSULATION RESISTANCE: 100MΩ MIN.
3-4. DIELECTRIC WITHSTAND VOLTAGE: AC 100V FOR 1 MINUTE.

NO.	DESCRIPTION	MATERIAL	REMARKS	QTY
4	FRONT SHELL	STAINLESS STEEL	CLEAN	1
3	MID PLATE	STAINLESS STEEL	N: 30U" MIN. UNDER PLATED OVER ALL.	1
2	CONTACT	COPPER ALLOY	N: 50U" MIN. UNDER PLATED OVER ALL. Au PLATED ON THE FUNCTIONAL AREA OF CONTACT (GOLD PLATING THICKNESS FOLLOW THE P/N) PLATING SPECIFICATIONS OF THE SOLDER AREA FOLLOW THE P/N	16
1	HOUSING	HIGH TEMPERATURE PLASTIC 94V-0	COLOR BLACK or WHITE	1

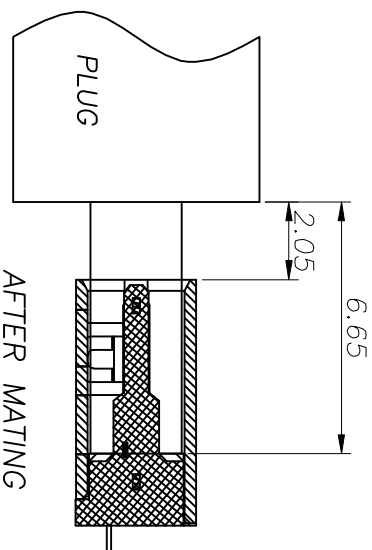
ZG LZG INDUSTRIAL CO. LTD		TOLERANCE UNLESS OTHERWISE SPECIFIED: 0.000F0.1	
PART NAME	TYPE C 16 PIN	0.0±0.3	0.1±2'
PART NO.	ZB48013-16FBAP-A	0.00±0.2	0.0±1'
		0.000F0.1	0.00±0.5'
			UNIT: mm

DRAWING NO.	ZB48013-16FBAP-A	DRAWING	DATE
CHECK:	李廷材	INITIAL	2020.02.18
APPROVAL:	李廷材	DWG. NO.	
DRAWING NO.	ZB48013-16FBAP-A	SHEET	1/2

ZONE	ECN. NO.	DESCRIPTION	DRAWING	DATE
A		INITIAL	林生財	2020.02.18

USB TYPE-C PIN ASSIGNMENTS

PIN NUMBER	SIGNAL NAME	PIN NUMBER	SIGNAL NAME
A1	GND	B12	GND
A4	VBUS	B9	VBUS
A5	CC1	B8	SBU2
A6	Dp1	B7	Dn2
A7	Dn1	B6	Dp2
A8	SBU1	B5	CC2
A9	VBUS	B4	VBUS
A12	GND	B1	GND



LZG INDUSTRIAL CO. LTD

PART NAME	TYPE C 16 PIN	TOLERANCE UNLESS	0.0±0.3	0.1±0.2	UNIT:	mm
PART NO.	ZB48013-16FBAP-A	OTHERWISE SPECIFIED:	0.00±0.2	0.00±0.1		

DRAWING:	林生財	DATE:	2020.02.18	SCALE	1:1
CHECK:	李宏鑫	DATE:	2020.02.18	MATERIAL	*
APPROVAL:	林生財	DATE:	2020.02.18	DWG. NO.	
DRAWING NO.	ZB48013-16FBAP-A	SHEET			2/2