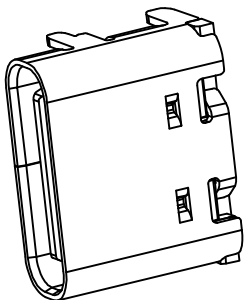
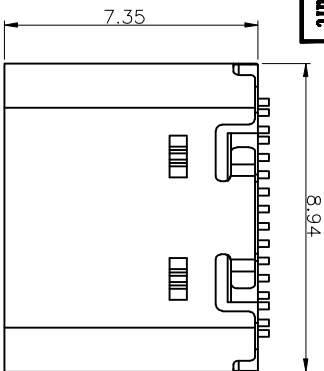
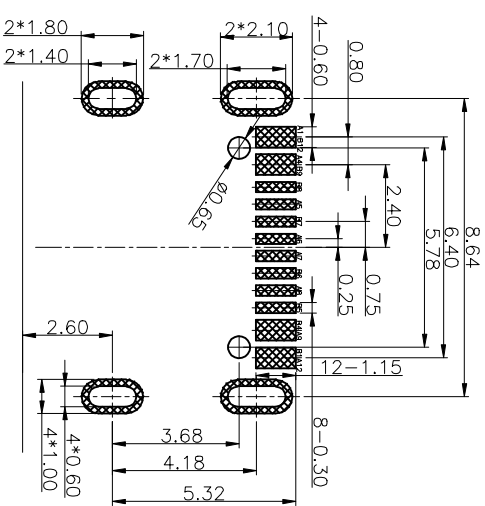
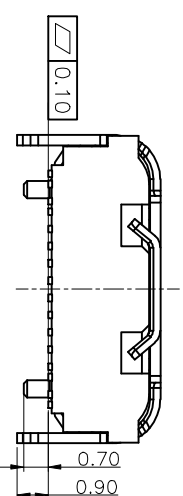
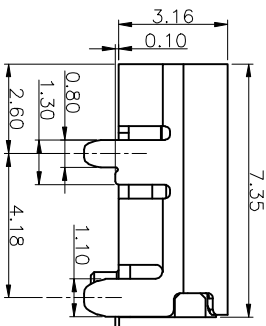
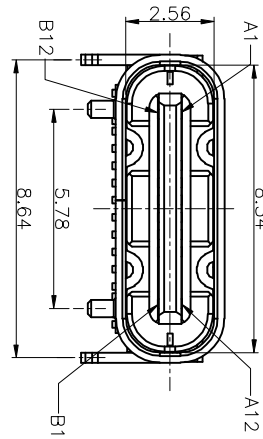


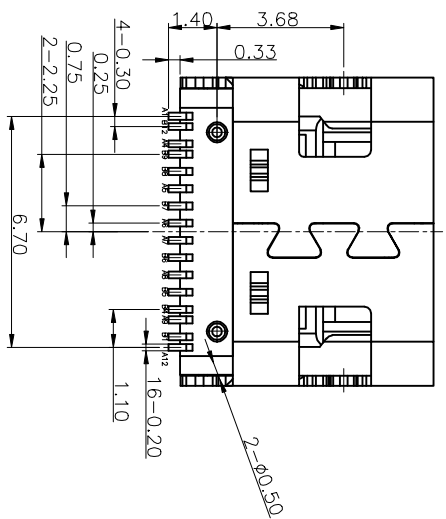
ROHS  
Compliant



3D VIEW



RECOMMENDED P.C.B. LAYOUT  
TOLERANCE UNSPECIFIED ±0.05mm



PIN	SIGNAL NAME	PIN	SIGNAL NAME	NO.	DESCRIPTION	MATERIAL	REMARKS	QTY
A1	GND	B12	GND	6	SHELL	STAINLESS STEEL	NI Plated	1
A4	VBUS	B9	VBUS	5	SHIELDING PLATE	STAINLESS STEEL	---	1
A5	CC1	B8	SBU2	4	MD	HIGH TEMPERATURE PLASTIC	COLOR BLACK	1
A6	DP1	B7	DN2	3	SHELL	STAINLESS STEEL	Au/Ni Plated	8
A7	DN1	B6	DP2	2	CONTACT	COPPER ALLOY	Au/Ni Plated	8
A8	SBU1	B5	CC2	1	HOUSING	HIGH TEMPERATURE PLASTIC	COLOR BLACK	1
A9	VBUS	B4	VBUS					
A12	GND	B1	GND					

**LZG INDUSTRIAL CO. LTD**

PART NAME: TYPE C 16 PIN  
PART NO.: ZB46012-16SBAP-A  
TOLERANCE UNLESS OTHERWISE SPECIFIED: 0.00±0.1

ZONE	ECN. NO.	DESCRIPTION	DRAWING	DATE
A		INITIAL	林生材	2020.02.18

DRAWING:	CHECK:	APPROVAL:	DRAWING NO.	DATE:	DATE:	DATE:	SCALE	MATERIAL	DWG. NO.	SHEET
林生材	李宏鑫	杨进宝	ZB46012-16SBAP-A	2020.02.18	2020.02.18	2020.02.18	1:1		*	1/1