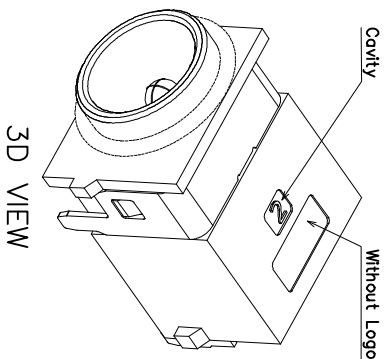
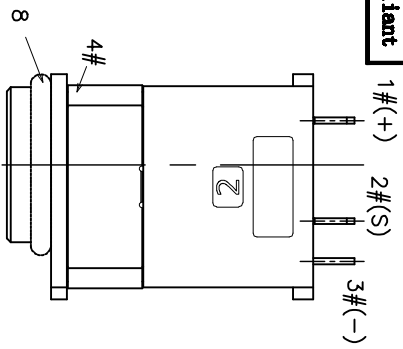
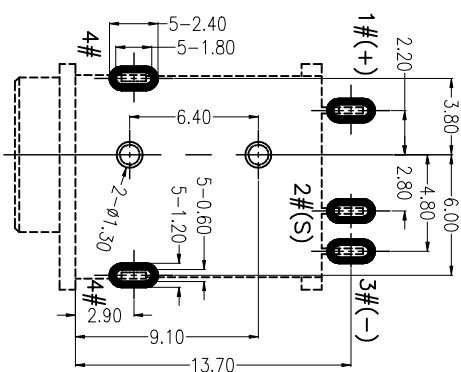
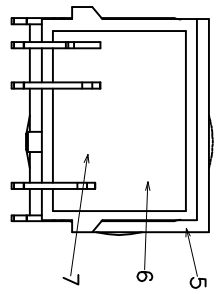
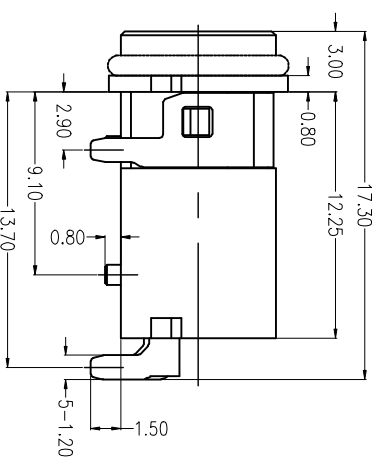
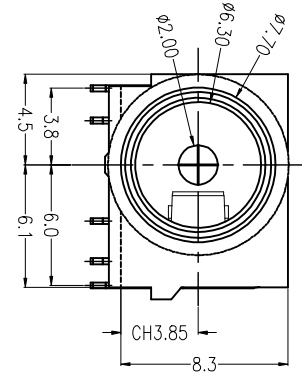


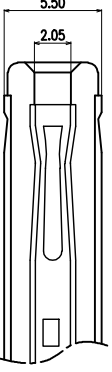
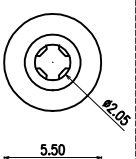
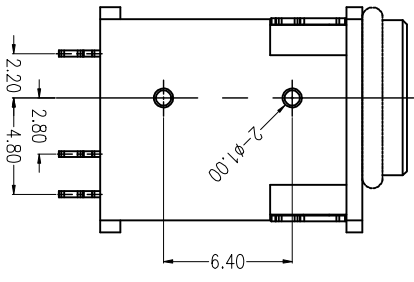
**RoHS**  
Compliant



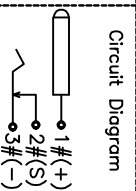
3D VIEW



PCB LAYOUT (TOP VIEW)  
TOLERANCE: ±0.05



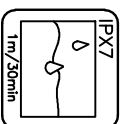
WHITE WATERPROOF RING



Circuit Diagram

Not to install the waterproof ring shipment	
WATERPROOF RING	SILICONE
GLUE	EPOXY
BACK COVER	HIGH TEMPERATURE
HOUSING	HIGH TEMPERATURE
TERMINAL 4#	STAINLESS STEEL
TERMINAL 3#	COPPER ALLOY
TERMINAL 2#	COPPER ALLOY
CENTER PIN	COPPER ALLOY
NO.	DESCRIPTION
1	WATERPROOF RING
2	GLUE
3	BACK COVER
4	HOUSING
5	TERMINAL 4#
6	TERMINAL 3#
7	TERMINAL 2#
8	CENTER PIN

NO.	DESCRIPTION	MATERIAL	REMARKS	QTY
1	WATERPROOF RING	SILICONE	WHITE	1
2	GLUE	EPOXY	COLOR BLACK	1
3	BACK COVER	HIGH TEMPERATURE	COLOR BLACK	1
4	HOUSING	HIGH TEMPERATURE	COLOR BLACK	1
5	TERMINAL 4#	STAINLESS STEEL	NICKEL PLATING OVERALL	1
6	TERMINAL 3#	COPPER ALLOY	NICKEL UNDERPLATING OVERALL, Au PLATING ON THE SOLDER AREA	1
7	TERMINAL 2#	COPPER ALLOY	NICKEL UNDERPLATING OVERALL, Au PLATING ON THE SOLDER AREA	1
8	CENTER PIN	COPPER ALLOY	NICKEL UNDERPLATING OVERALL, Au PLATING ON THE SOLDER AREA	1



NOTES

1. Current Rating: 24V & 1.5A Max.
2. Contact Resistance: 50m Ohms Max.(Initial)
3. Insulation Resistance: 100M Ohms Min./500V DC
4. Dielectric Withstanding Voltage: 500V AC/1Minute
5. Mating Force: 35N Max, Withdrawal Force: 3N Min.
6. Durability: 5,000 Cycles
7. Operating Temperature: -25°C to +85°C
8. WATER PROOFNESS: THIS PRODUCT IS BASED ON IPX7.

ZONE	ECN.N.O.	DESCRIPTION	DRAWING	DATE
A		INITIAL	##	2020.02.18

**LZG INDUSTRIAL CO., LTD**

PART NAME	ø2.0 DC WATERPROOF POWER JACK	TOLERANCE UNLESS OTHERWISE SPECIFIED:	0.0±0.30 0.00±0.0 0.000±0.0	0.1±0.2 0.0±0.1 0.00±0.5	UNIT: mm	DRAWING NO.	ZB30007-05DBAP-A	SHEET	1/1
PART NO.	ZB30007-05DBAP-A								